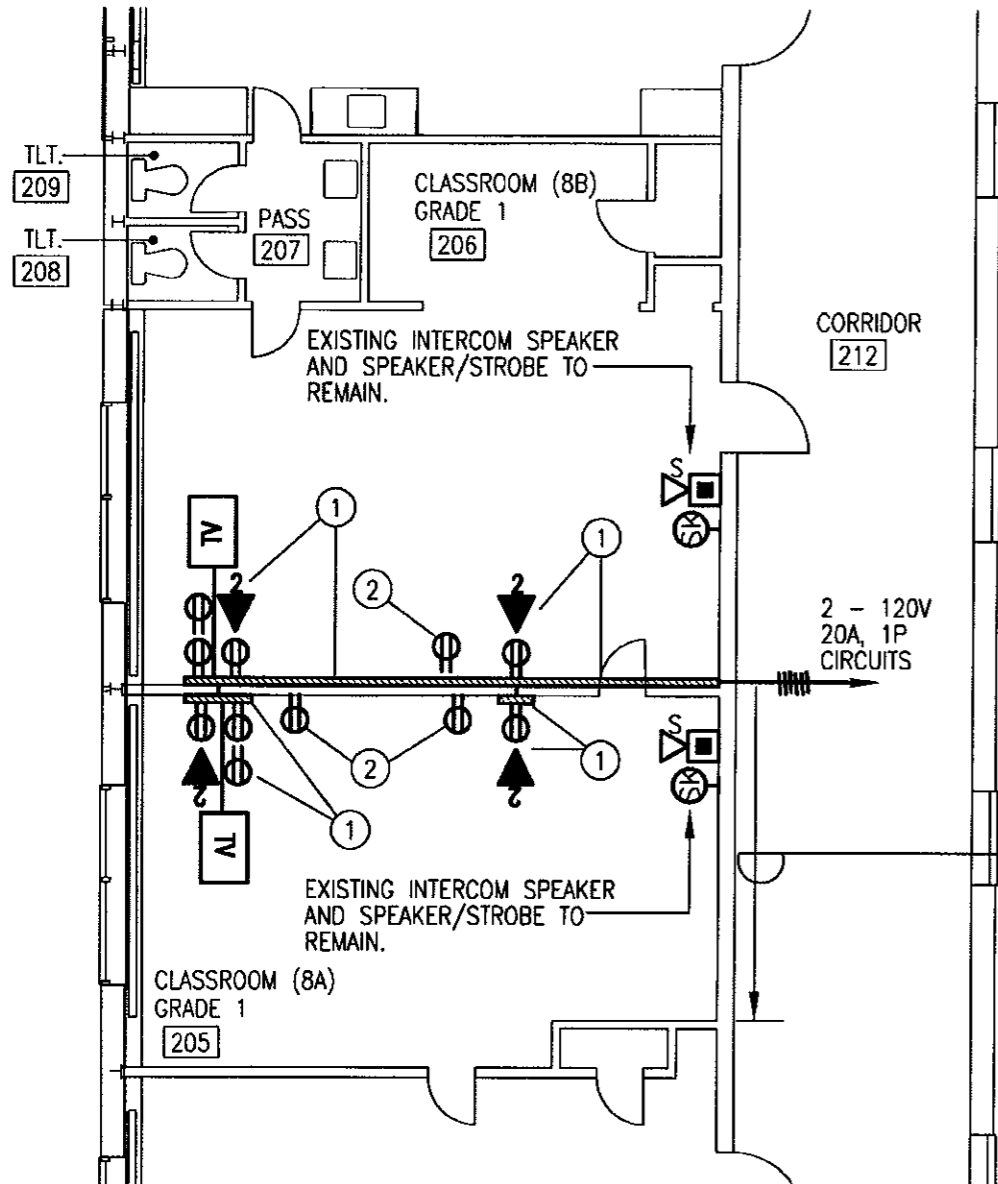
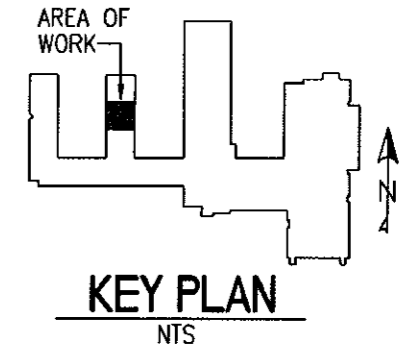


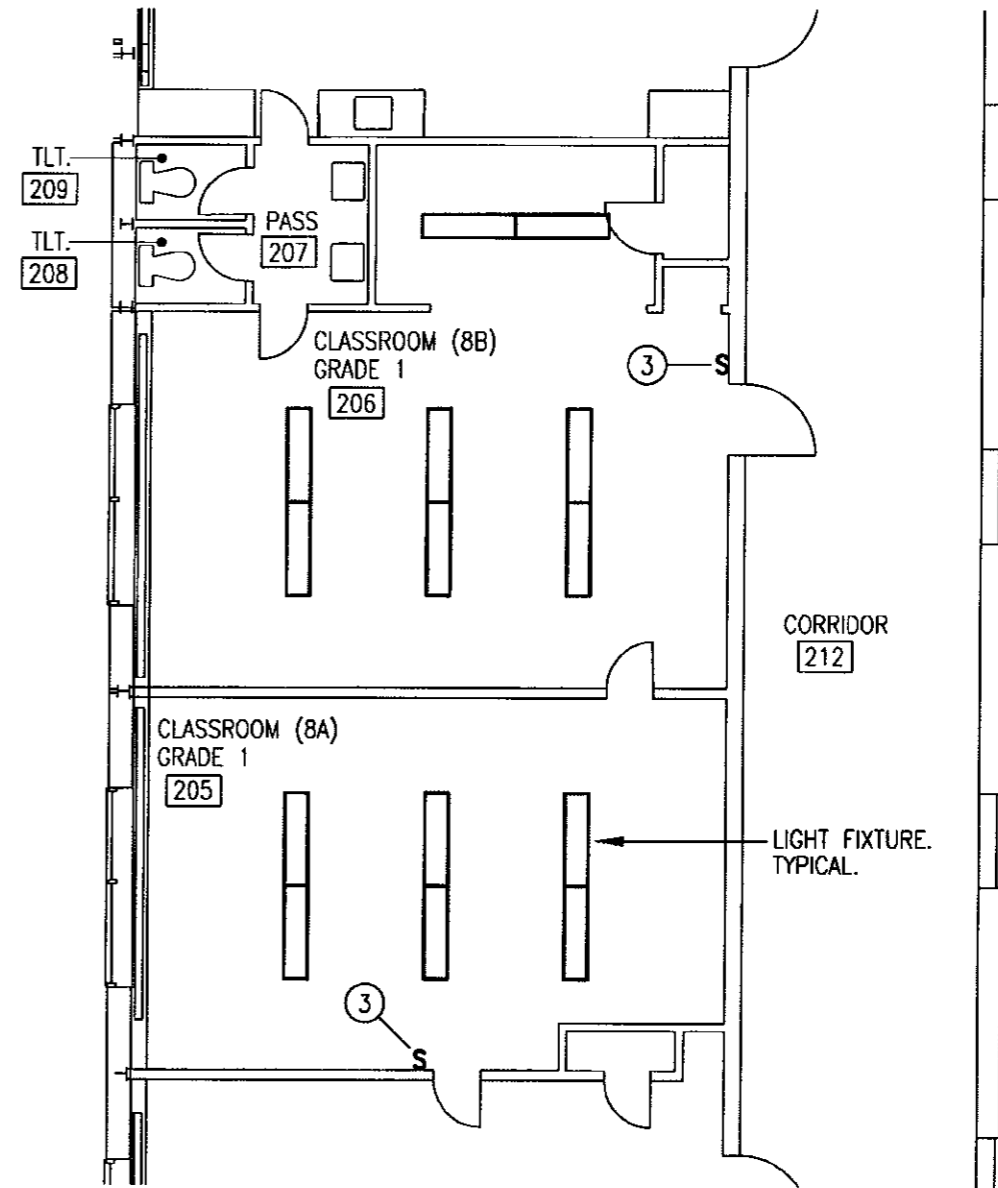
- ELECTRICAL DEMOLITION WORK SYMBOLS -

TAG	ACTION
①	DISCONNECT AND REMOVE EXISTING WIREMOLD 5400 SURFACE RACEWAY(S) AND ASSOCIATED RECEPTACLE, DATA, AUDIO, AND VIDEO OUTLETS. RETAIN EXISTING RECEPTACLES, OUTLETS, AND WIRING FOR REUSE.
②	DISCONNECT AND REMOVE EXISTING RECEPTACLE(S) AND ASSOCIATED WIRING.
③	DISCONNECT AND REMOVE EXISTING LIGHT SWITCH. RETAIN EXISTING WIRING IN PLACE FOR REUSE.



PART FLOOR PLAN - POWER
1/8" = 1' - 0"

PULL POWER, DATA, AND VIDEO WIRING BACK TO THIS POINT IN CORRIDOR. REMOVE AND REPLACE EXISTING 1 X 1 CEILING TILES AS REQUIRED FOR WORKING ACCESS ABOVE CORRIDOR CEILING.



PART FLOOR PLAN - LIGHTING
1/8" = 1' - 0"

REVISIONS

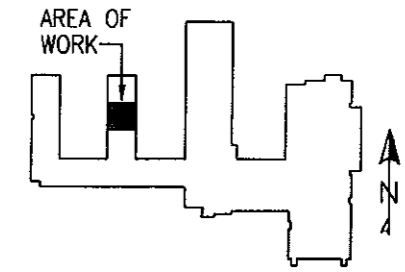
**ALTERATIONS TO ROOMS 8A AND 8B
DUFFY ELEMENTARY SCHOOL**
95 WESTMINSTER DRIVE
WEST HARTFORD, CONNECTICUT

BEMS ASSOCIATES, L.L.C.
Consulting Engineers
101 Fern Road
Newtown, CT 06456
(860) 467-3333
Fax: (860) 467-3579

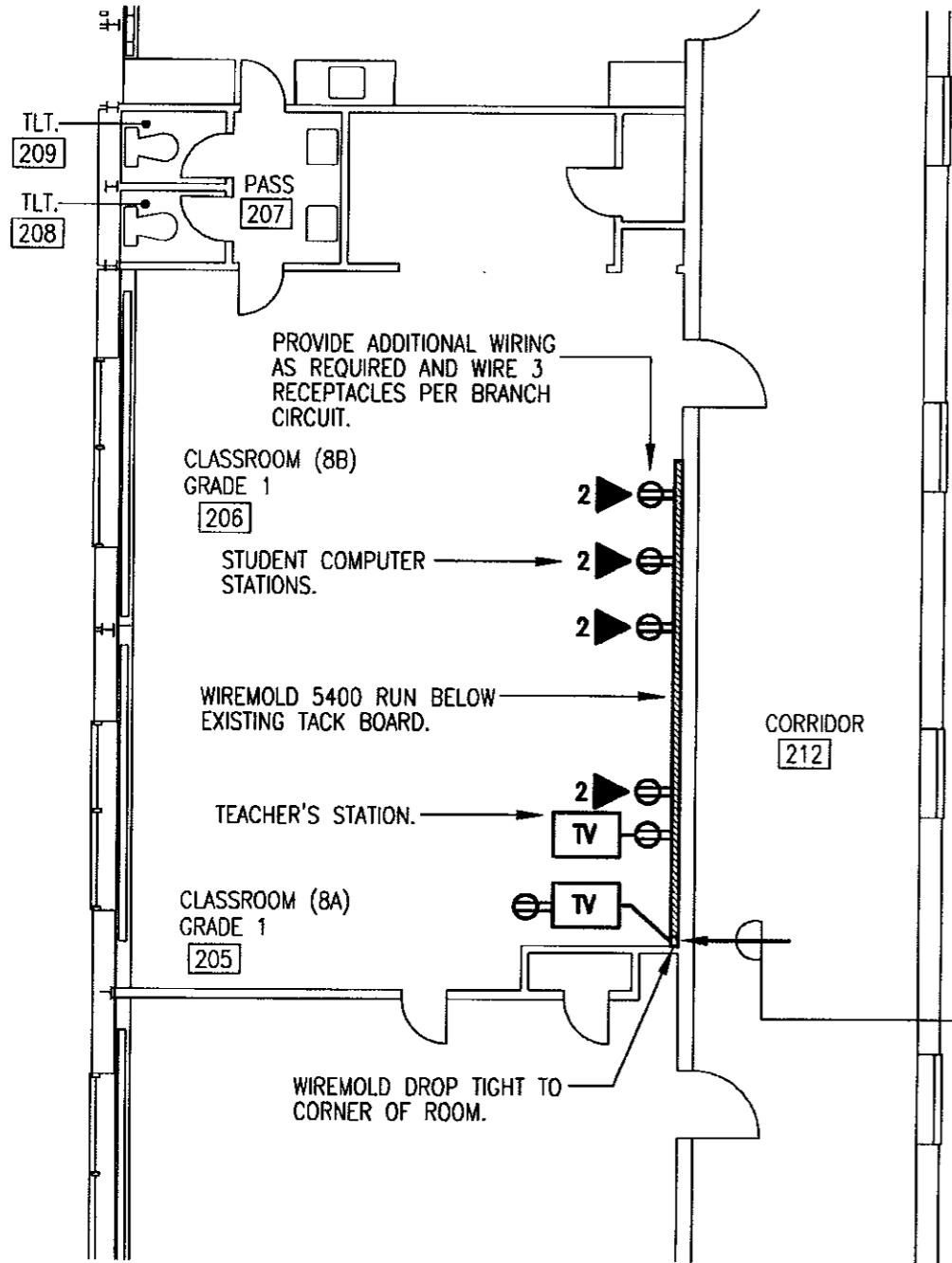
**ELECTRICAL
DEMOLITION
PLANS**

DATE: 3/6/09
SCALE: AS NOTED
DRAWN: KPS
JOB NO. 09-240

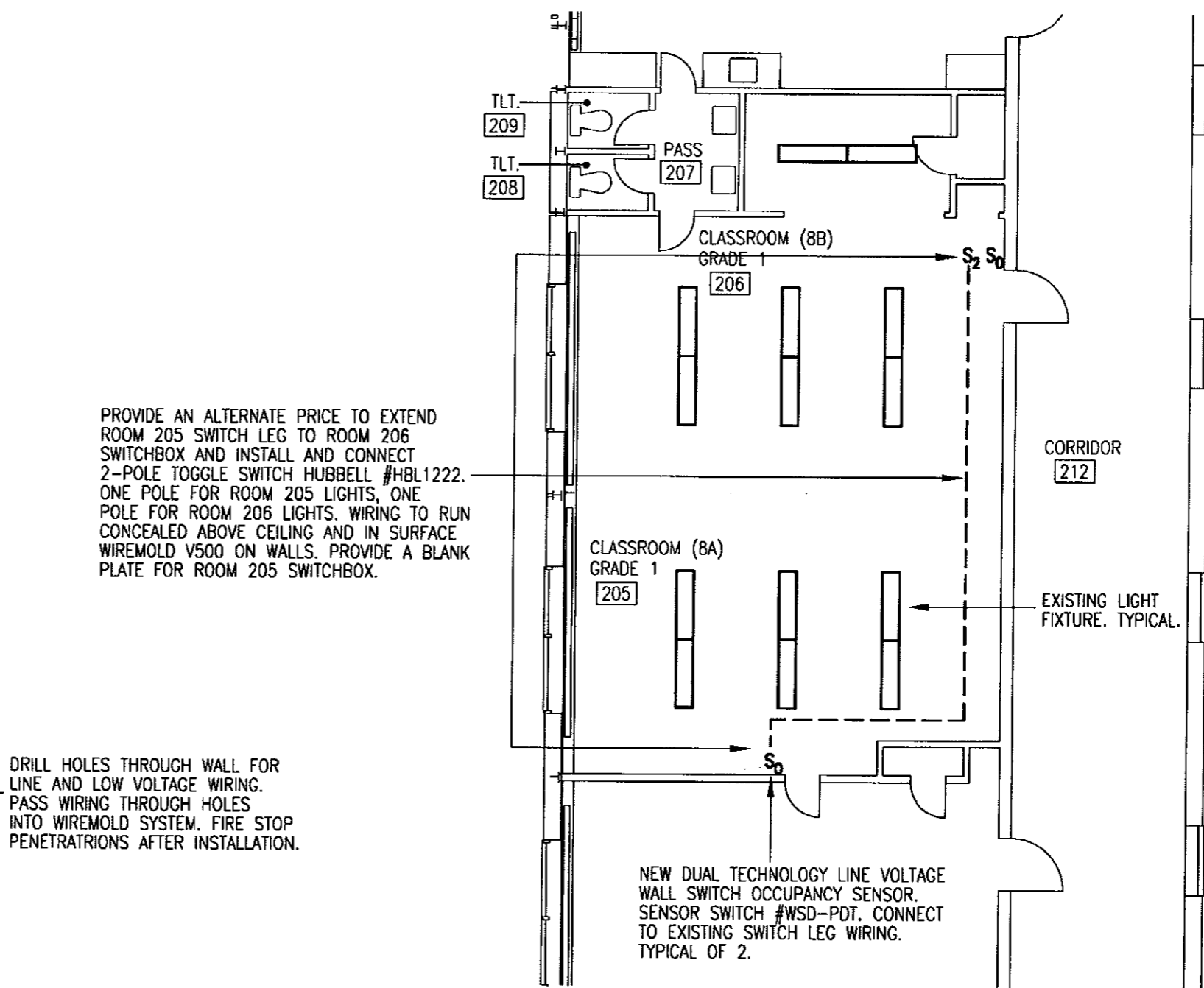
DWG. NO.
ED1



KEY PLAN
NTS



PART FLOOR PLAN - POWER
1/8" = 1' - 0"



PART FLOOR PLAN - LIGHTING
1/8" = 1' - 0"

ALTERATIONS TO ROOMS 8A AND 8B
DUFFY ELEMENTARY SCHOOL
95 WESTMINSTER DRIVE
WEST HARTFORD, CONNECTICUT

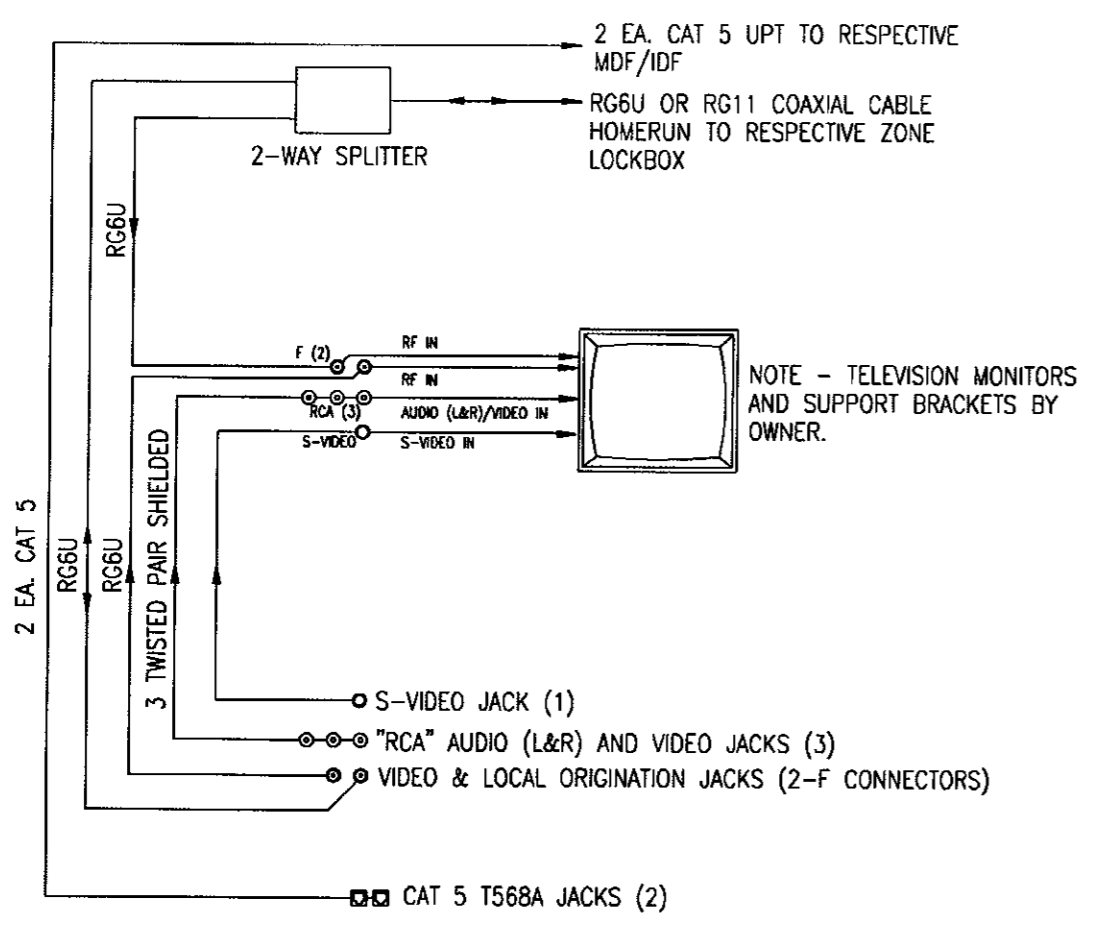
BEMIS ASSOCIATES, L.L.C.
Consulting Engineers
101 Fern Road
Newington, CT 06111
(860) 647-3333
Fax: (860) 647-3379

LIGHTING
AND
POWER
PLANS

DATE: 3/6/09
SCALE: AS NOTED
DRAWN: KPS
JOB NO. 09-240

DWG. NO.





VIDEO INTERCONNECTION SCHEMATIC
NTS

2-COMPARTMENT WIREMOLD 5400 SURFACE RACEWAY WITH FULL WIDTH COVER. PROVIDE WITH WIRE CLIPS, COVER SEAM CLIPS, BASE SEAM CLIPS, END CAPS, ENTRANCE END FITTINGS, AND OTHER FITTINGS AS REQUIRED FOR A PROPER INSTALLATION. TIE-WRAP WIRING IN RACEWAY BY SYSTEM WITH NYLON TIE-WRAPPS.

ENTRANCE END FEED.

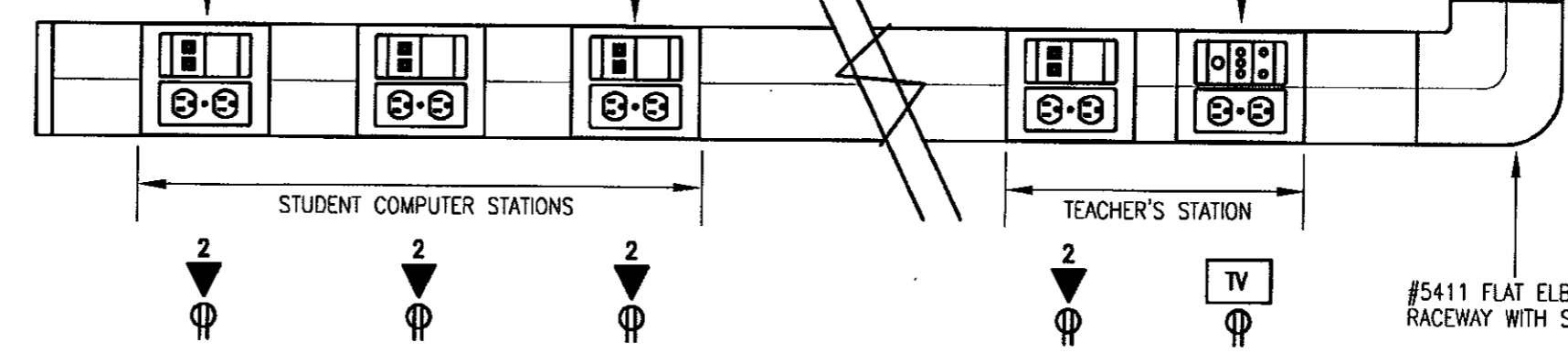
DUPLEX RECEPTACLE AND TV OUTLETS (2-F CONNECTORS, 3-RCA, 1-S VIDEO).

PROVIDE VIDEO INTERCONNECTION WIRING PER SCHEMATIC ON THIS DRAWING.

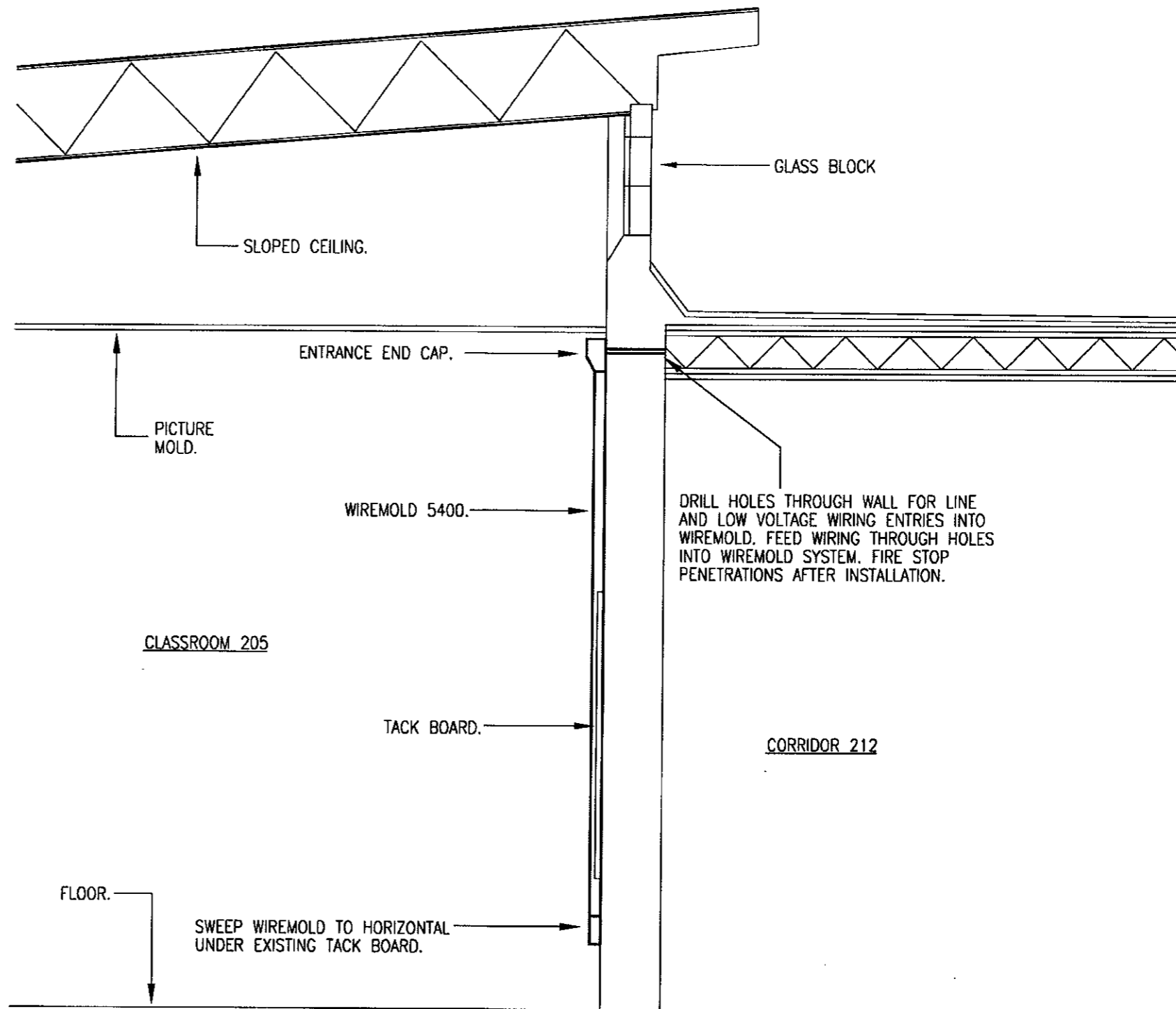
#5407 DEVICE BRACKET WITH #5507D RECEPTACLE FACEPLATE AND ACTIVATE INSERTS AS REQUIRED FOR DATA AND VIDEO OUTLETS. TYPICAL FOR EACH OUTLET GROUPING.

DUPLEX DATA OUTLET AND DUPLEX RECEPTACLE. TYPICAL.

DUPLEX RECEPTACLE AND TV OUTLETS (2-F CONNECTORS, 3-RCA, 1-S VIDEO).



WIREMOLD LAYOUT DETAIL
NTS



SECTION THROUGH ROOMS 205/212

1/2" = 1'- 0"

REVISIONS

ALTERATIONS TO ROOMS 8A AND 8B
DUFFY ELEMENTARY SCHOOL
 95 WESTMINSTER DRIVE
 WEST HARTFORD, CONNECTICUT

BEMS ASSOCIATES, L.L.C.
 Consulting Engineers

101 Fern Road
 Newington, CT 06111
 (860) 897-3233
 Fax: (860) 897-3278
 www.bemsassociates.com

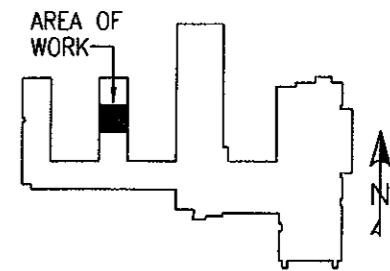
**ELECTRICAL
 DETAILS**

DATE: 3/6/09
 SCALE: AS NOTED
 DRAWN: KPS
 JOB NO. 09-240

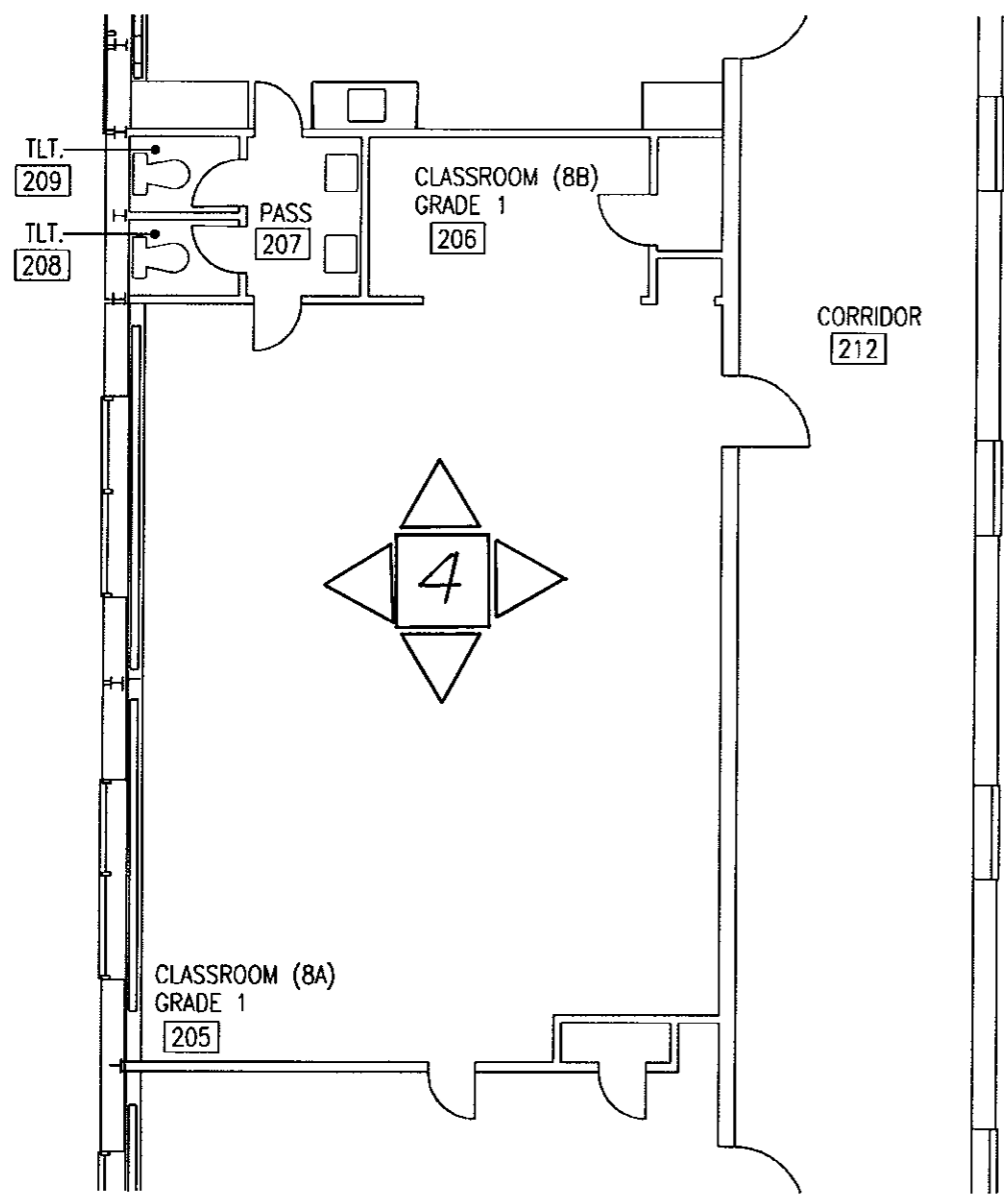
DWG. NO.

E3

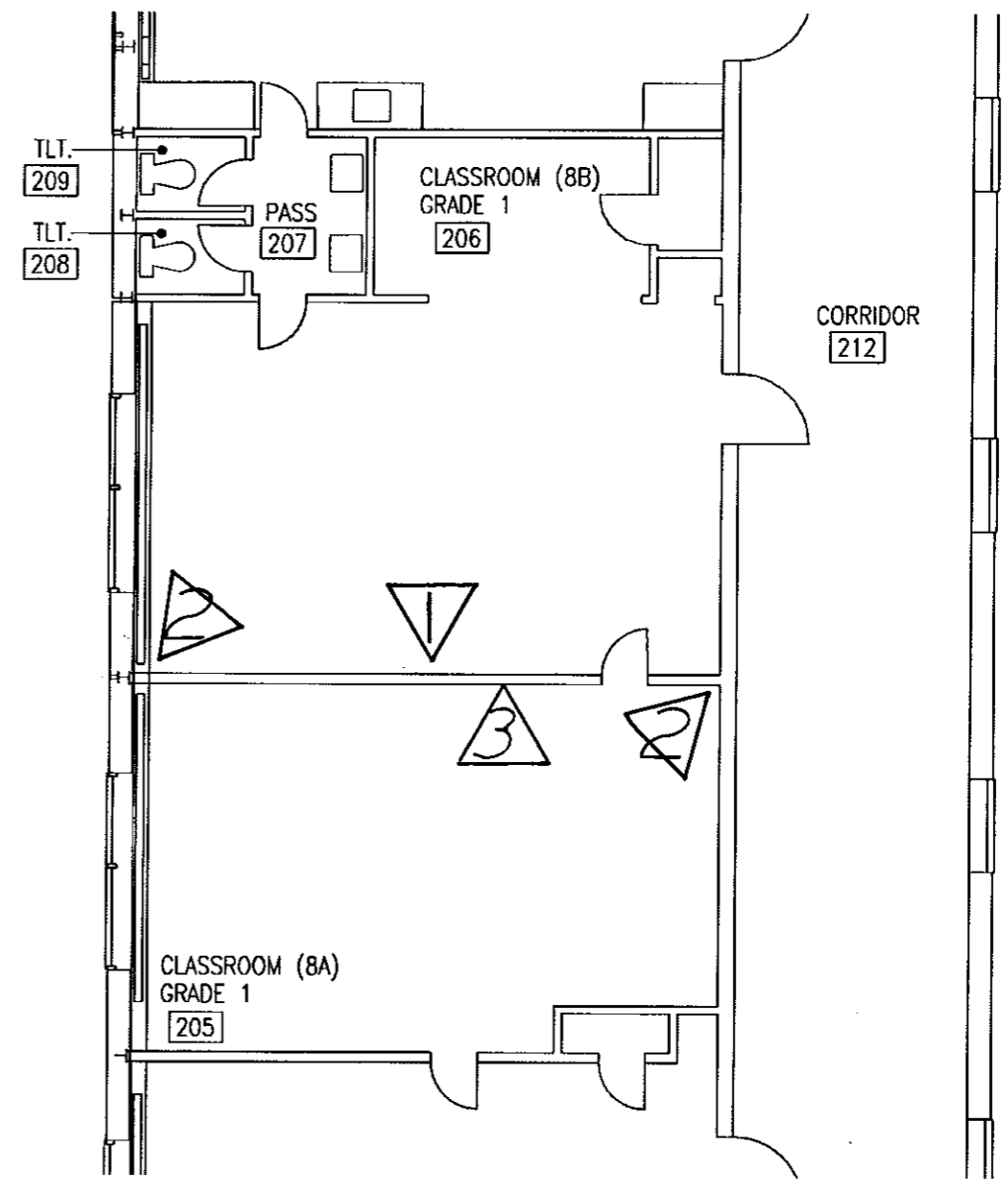
1. remove wall, door, and door frame
2. patch walls restore to match existing
3. patch carpet to match existing
4. prime coat and double finish coat all walls



KEY PLAN
NTS



PART FLOOR PLAN - NEW CONDITIONS
1/8" = 1' - 0"



PART FLOOR PLAN - EXISTING CONDITIONS
1/8" = 1' - 0"

ALTERATIONS TO ROOMS 8A AND 8B
DUFFY ELEMENTARY SCHOOL
95 WESTMINSTER DRIVE
WEST HARTFORD, CONNECTICUT

BEMIS ASSOCIATES, L.L.C.
Consulting Engineers
101 Fern Road
Newington, CT 06111
(860) 687-3333
Fax: (860) 687-3338
www.bemisassociates.com

FLOOR PLANS

DATE: 3/6/09
SCALE: AS NOTED
DRAWN: KPS
JOB NO. 09-240

DWG. NO.

A1